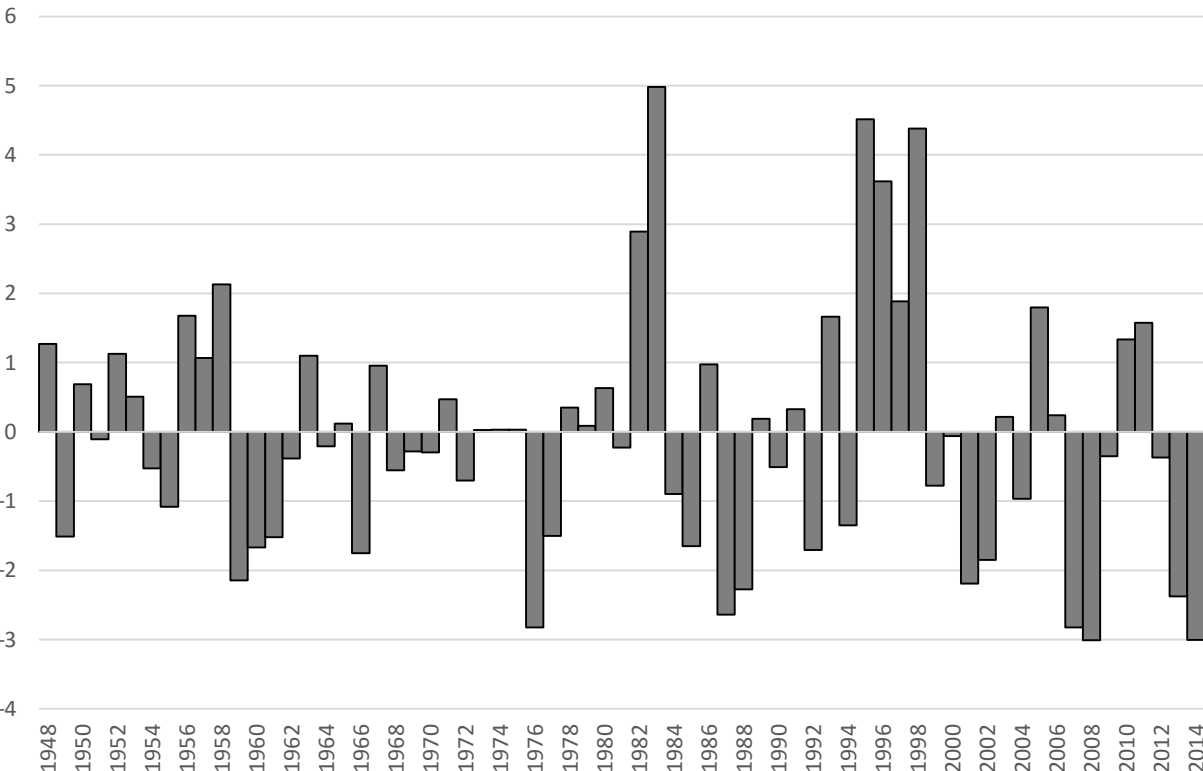




Weather/Climate

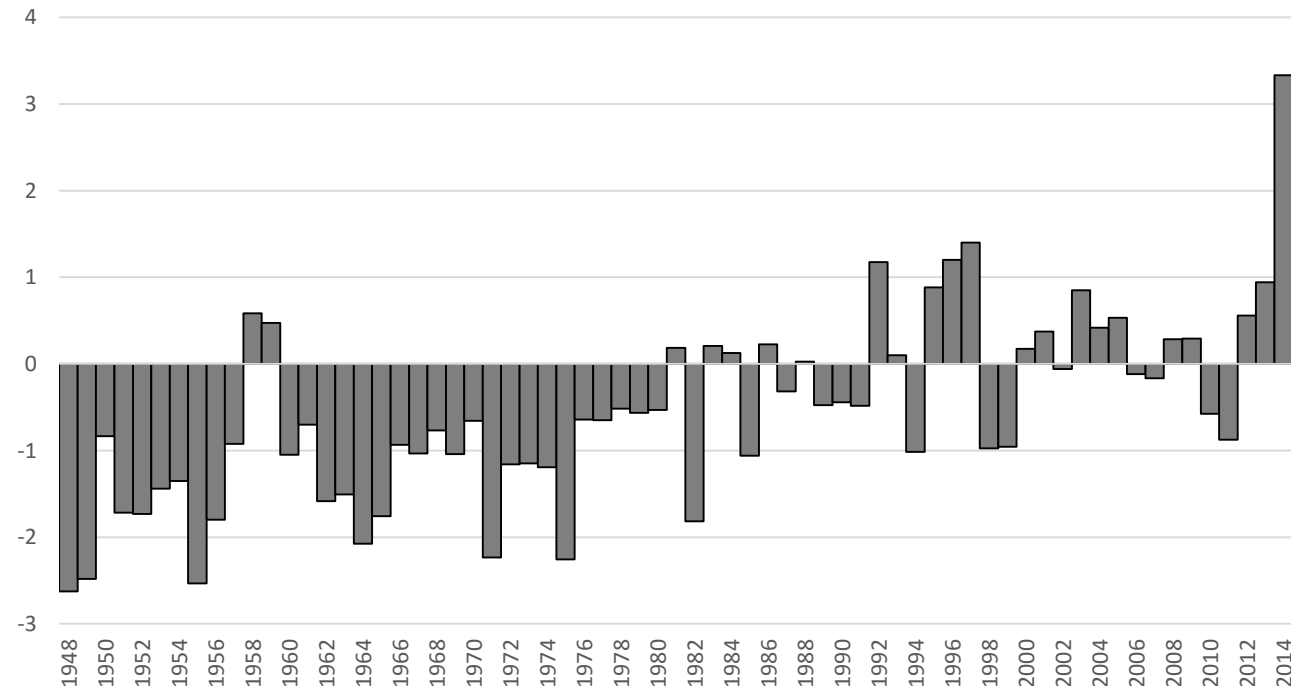
-Drought

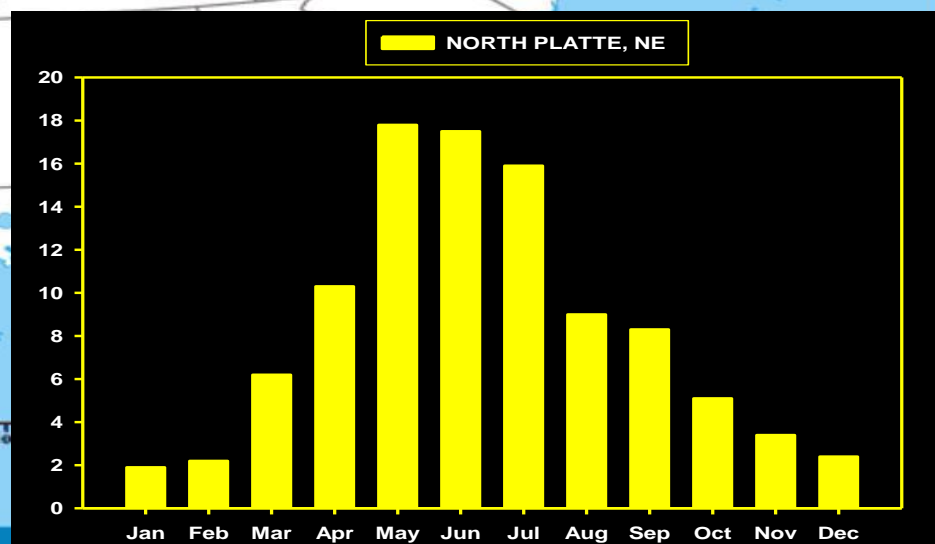
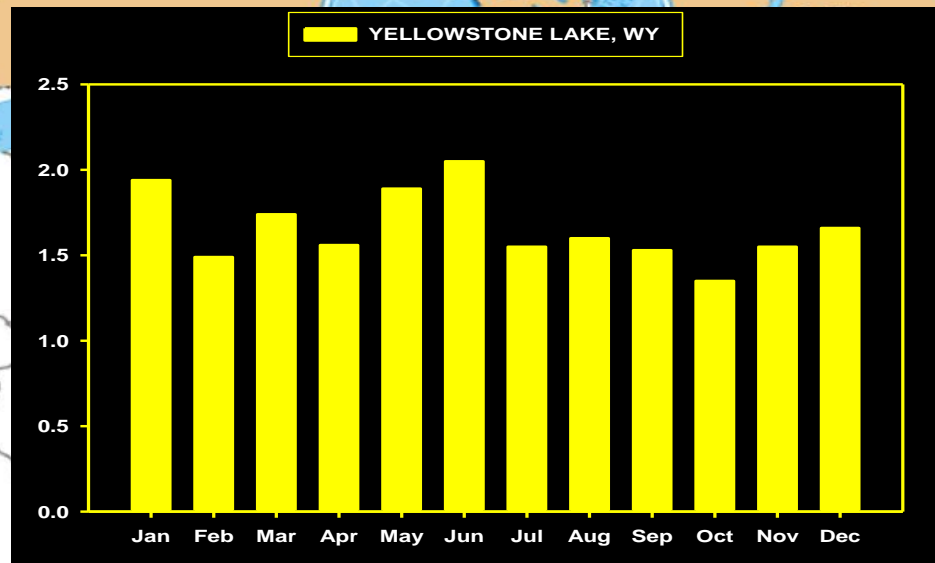
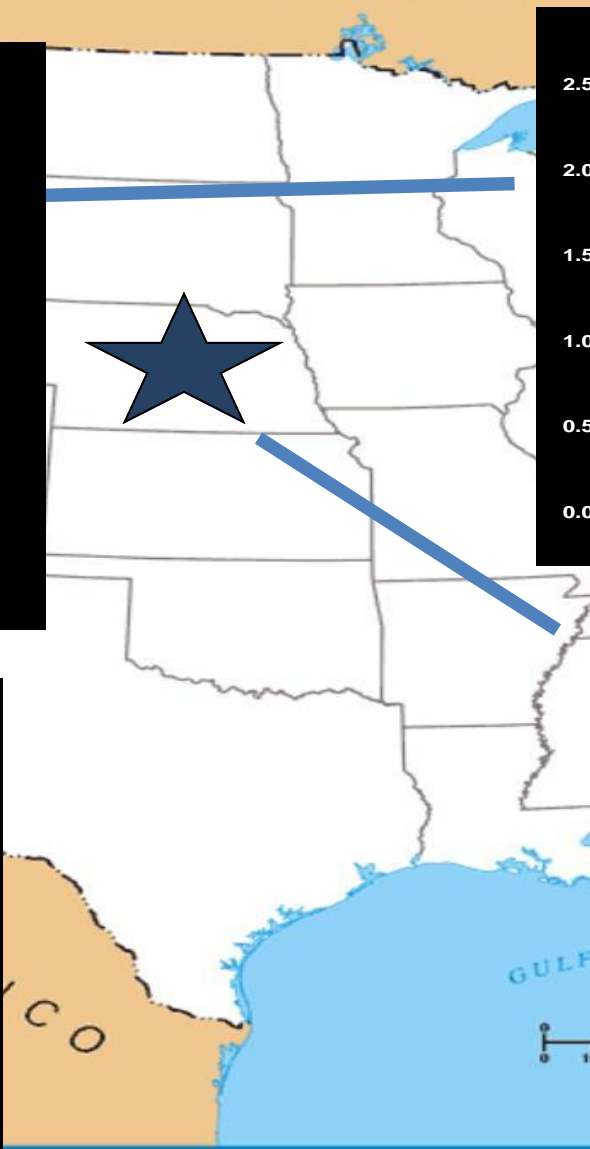
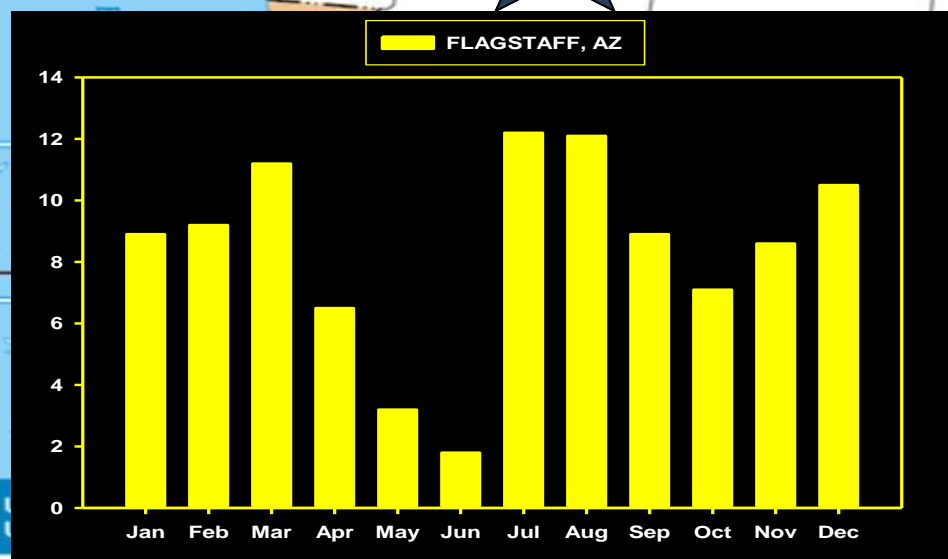
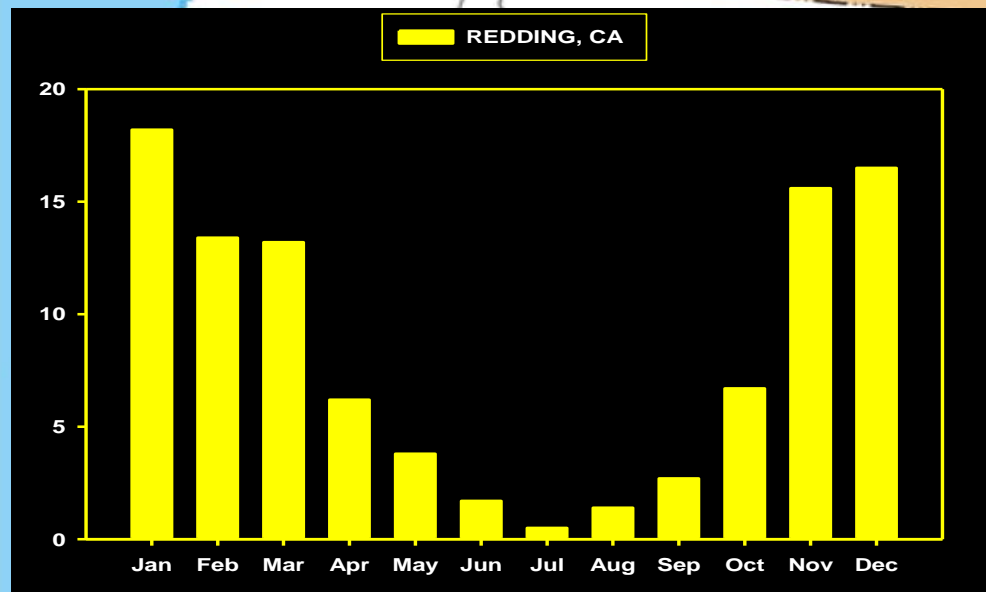
Palmer Drought Severity Index
CA, Climate Division 2 (Sacramento Drainage)



-High temperatures

Mean Annual Temperature Anomaly
CA, Climate Division 2 (Sacramento Drainage)





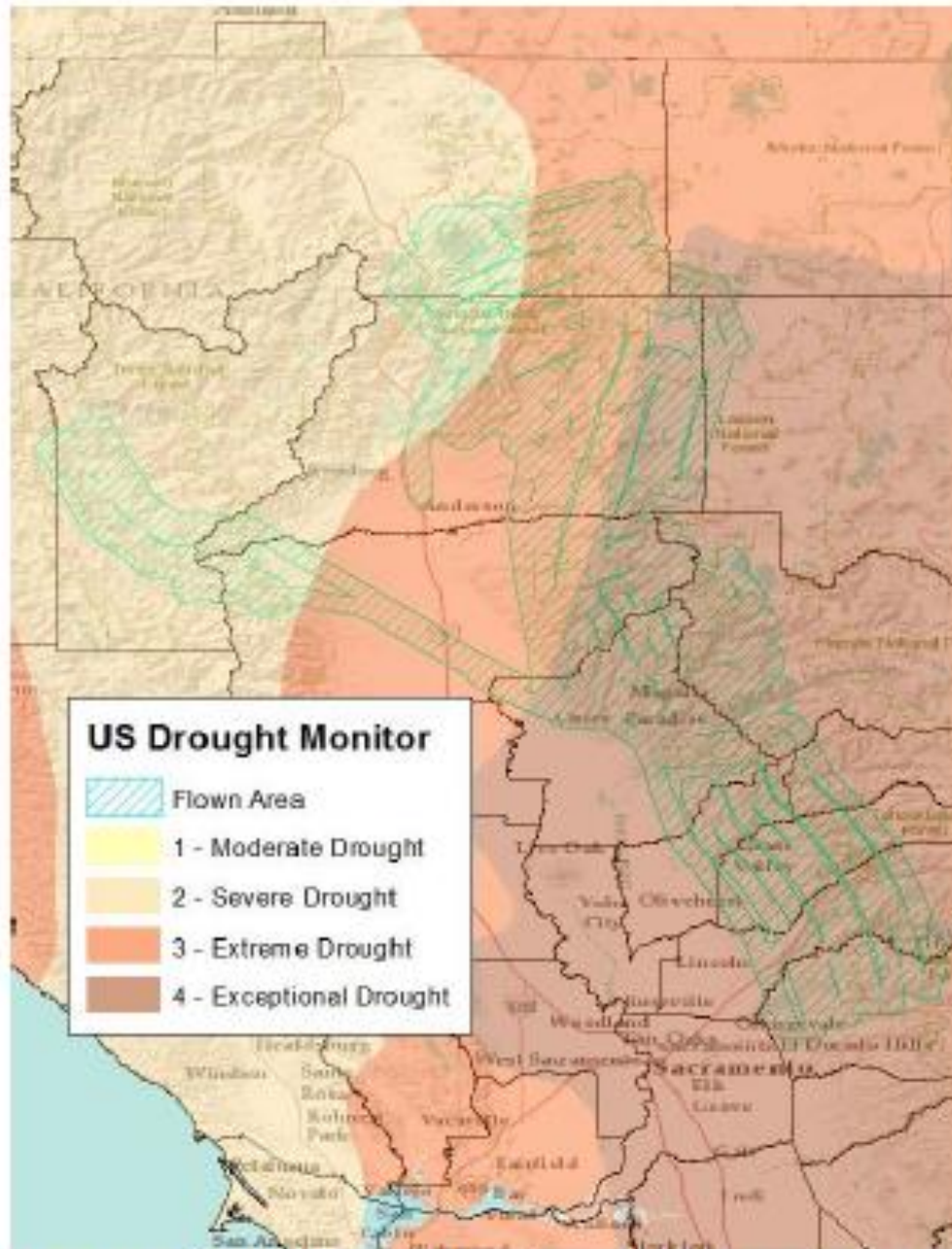


Figure 1. Flown area and drought conditions as of Aug 18, 2015 based on USGS Drought Monitor.

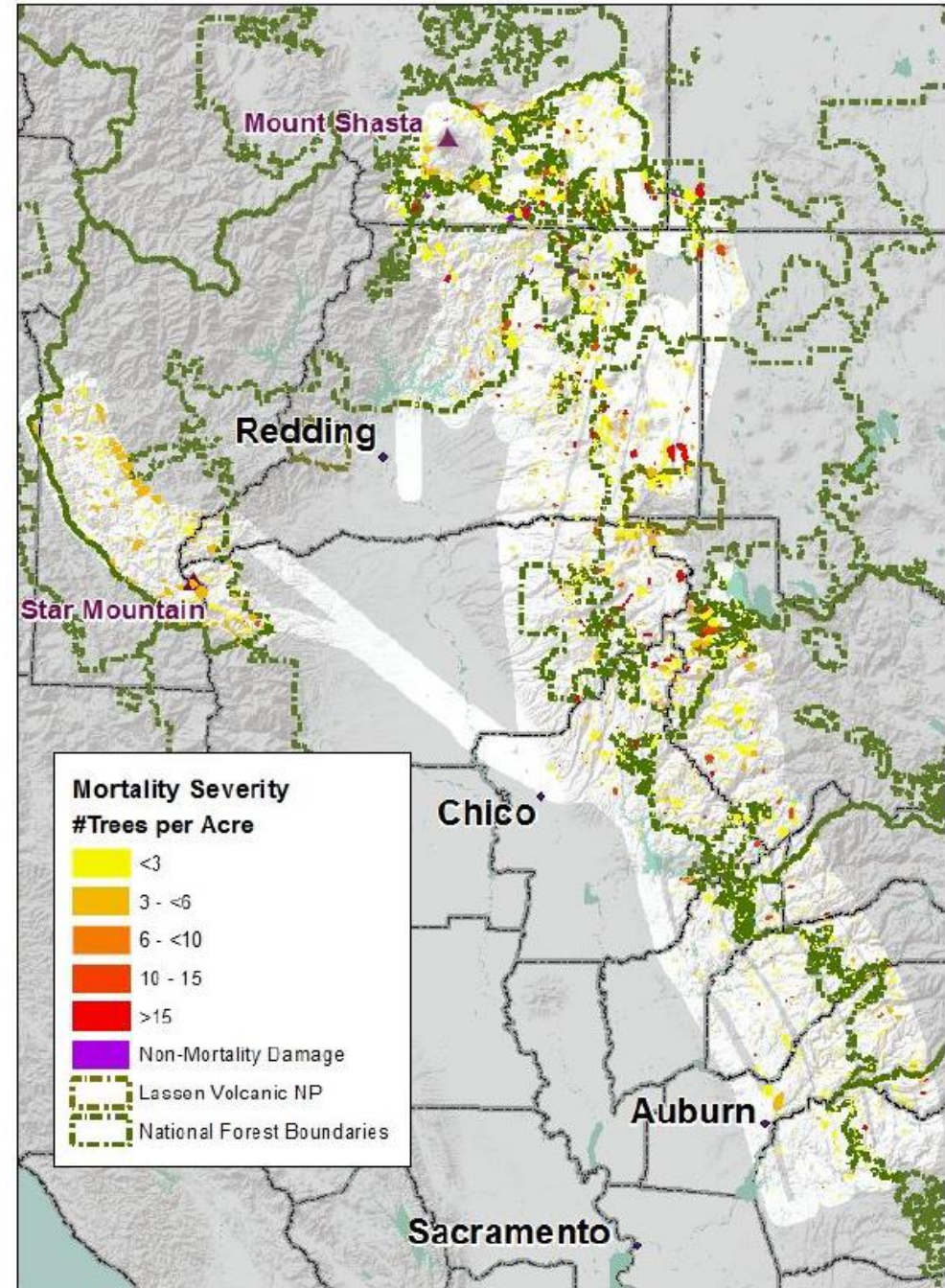


Figure 3. Map of area surveyed depicting tree mortality and other damage.

Forest pests





Figure 6. Increasingly intense California red fir mortality south of Kettle Mountain and west of Burney within the Shasta-Trinity National Forest.



Figure 7. Ongoing whitebark pine mortality caused by mountain pine beetle south of Curtis within the Shasta-Trinity National Forest.